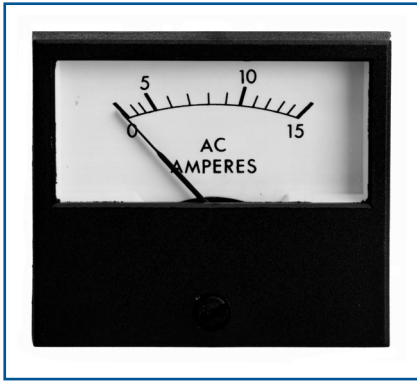


# 549 Series Panel Meters



Compact panel meters designed to fit standard 17/32" switch knock outs. The range offers high accuracy AC and DC ammeters and voltmeters, elapsed time meters and impulse counters.

## Specification

Enclosure Code:	IP42 (IEC 529)
System Frequencies:	A.C. Ammeters: 50, 60 or 400Hz A.C. Voltmeters: 50 or 60Hz Elapsed Time Meter: 50 or 60Hz
System Voltage:	Elapsed Time Meter: 110/130V A.C., 200/250V A.C., 6 or 12V D.C.
Input Ratings Available:	A.C. Ammeter: 50mA to 5A (self contained) extendible to 50A with external wound primary CT A.C. Voltmeter: 30 to 600V D.C. Ammeter: 100µA to 20mA D.C. Voltmeter: 50mV to 600V
Scale:	Angle: 90 degrees. Length: 1 inch (26mm)
Operating Temperature:	-10°C to +55°C (15 to 130°F).
Bezel Window:	Toughened glass
Fixing on Panel:	Simple clamp fixing
Approvals:	EMC and LVD, ABS American Bureau of Shipping

## Features

- Compact size
- Fits standard 17/32 inch switch knock out
- Toughened glass window
- A.C. and D.C. ammeters and voltmeters available
- "Hours Run" and impulse counters available

## Benefits

- Simple clamp fixing
- Easy installation on replacement
- Panel space saving
- Customised options and features

## Applications

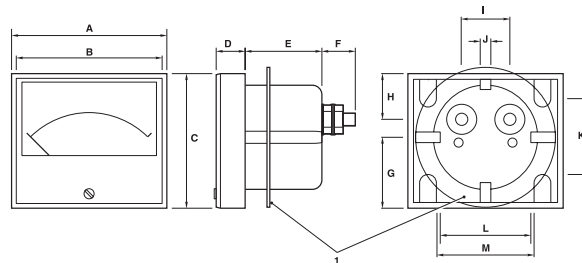
- Switchgear
- Distribution systems
- Generator sets
- Control panels
- Energy management
- Building management
- Utility power monitoring
- Process control
- Motor control

## Approvals

ABS American Bureau of Shipping approvals 93-LD 17806-X

K-Tech Inc.  
Ph.1 847-375 9524  
Fx.1 847-375-9523  
meters@k-Tech.com  
www.K-Tech.com

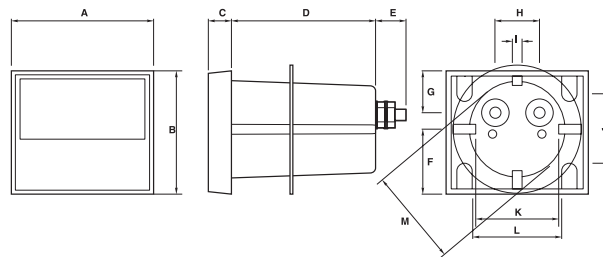
## Dimensions



Retaining Clip

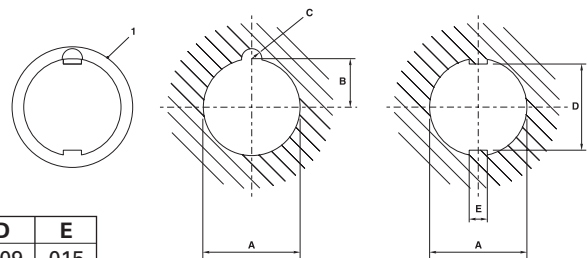
	A	B	C	D	E*	F	G	H	I	J	K	L	M
in	1.81		1.56	0.34	0.91	0.51	0.85	0.24	0.51	0.16	1.08	1.08	1.18
mm	46		39.6	8.6	23	13	21.6	6.1	13	4	27.5	27.5	30

## Elapsed Time Meters

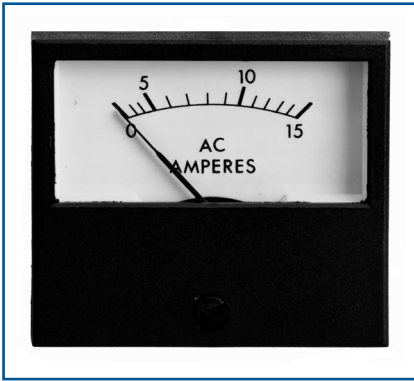


	A	B	C	D	E	F	G	H	I	J	K	L	M
in	1.84	1.59	0.34	1.75	0.51	0.86	0.24	0.51	0.16	1.08	1.08	1.18	1.18
mm	46.8	40.4	8.6	44.3	13	21.9	6	13	4.1	27.5	27.5	30	30

## Panel cut-out



	A	B	C	D	E
in	1.2	0.57	0.25	1.09	0.15
mm	30.5	14.5	6.4	27.8	3.9



A.C. Ammeter

K-Tech Inc.  
 Ph.1 847-375 9524  
 Fx.1 847-375-9523  
 meters@k-Tech.com  
 www.K-Tech.com

## A.C. Ammeter

**Product Codes – Self Contained rating 50mA for use with separate wound primary current transformer**

Input	Scaling	Catalogue No.
50mA	0-1A	549-78AA-HXLA
50mA	0-5A	549-78AA-HXLS
50mA	0-7.5A	549-78AA-HXMF
50mA	0-10A	549-78AA-HXMT
50mA	0-15A	549-78AA-HXND
50mA	0-20A	549-78AA-HXNG
50mA	0-30A	549-78AA-HXNL
50mA	0-40A	549-78AA-HXNP
50mA	0-50A	549-78AA-HXNT

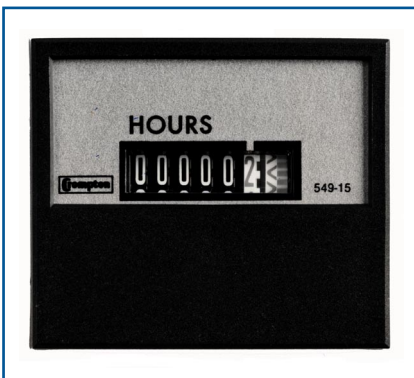
**Product Codes – For use with external current transformer. Other scales are available.**

Input	Scaling	Catalogue No.
5A	0-50A	549-78AA-LSNT
5A	0-60A	549-78AA-LSNW
5A	0-75A	549-78AA-LSPB
5A	0-80A	549-78AA-LSPD
5A	0-100A	549-78AA-LSPK
5A	0-150A	549-78AA-LSPZ
5A	0-200A	549-78AA-LSRL
5A	0-300A	549-78AA-LSRX
5A	0-400A	549-78AA-LSSC
5A	0-500A	549-78AA-LSSF
5A	0-600A	549-78AA-LSSJ
5A	0-800A	549-78AA-LSSN
5A	0-1000A	549-78AA-LSSS
5A	0-1200A	549-78AA-LSSU
5A	0-1500A	549-78AA-LSTC
5A	0-1600A	549-78AA-LSTE
5A	0-2000A	549-78AA-LSTM

## A.C. Voltmeter

**Product Codes – Other scales are available.**

Input	Scaling	Catalogue No.
150V	0-150V	549-78VA-PZPZ
150V	0-300V	549-78VA-PZRX
150V	0-600V	549-78VA-PZSJ
150V	0-750V	549-78VA-PZSM



Elapsed Time Meter

## Elapsed Time Meter

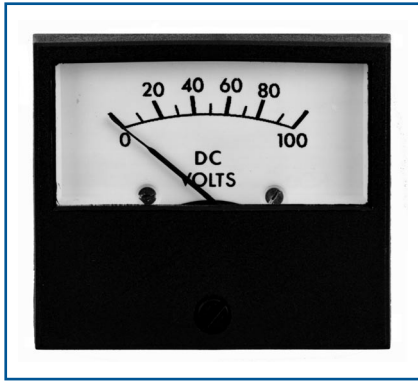
**Product Codes**

Input	Scale	Catalogue No.
110/130V A.C., 50Hz	99999.99	549-155A-PNC5-ZH
110/130V A.C., 60Hz	99999.99	549-156A-PNC6-ZH
200/250V A.C., 50Hz	99999.99	549-155A-RNC5-ZH
200/250V A.C., 60Hz	99999.99	549-156A-RNC6-ZH
6V D.C., D.C.	99999.99	549-151A-LWZH
12V D.C., D.C.	99999.99	549-151A-MUZH

## Impulse Counters

**Product Codes**

Input	Scale	Catalogue No.
120V A.C., 60Hz	999999	549-257A-PQC6



D.C. Voltmeter

K-Tech Inc.  
 Ph.1 847-375 9524  
 Fx.1 847-375-9523  
 meters@k-Tech.com  
 www.K-Tech.com

## D.C. Ammeter

### Product Codes – For use with current shunts

Input	Scaling	Catalogue No.
0-50mV	0-5	549-80AA-ECLS
0-50mV	0-10	549-80AA-ECMT
0-50mV	0-15	549-80AA-ECND
0-50mV	0-20	549-80AA-ECNG
0-50mV	0-30	549-80AA-ECNL
0-50mV	0-50	549-80AA-ECNT
0-50mV	0-80	549-80AA-ECPD
0-50mV	0-100	549-80AA-ECPK
0-50mV	0-150	549-80AA-ECPZ
0-50mV	0-200	549-80AA-ECRL
0-50mV	0-250	549-80AA-ECRS
0-50mV	0-300	549-80AA-ECRX
0-50mV	0-400	549-80AA-ECSC
0-50mV	0-500	549-80AA-ECSF
0-50mV	0-600	549-80AA-ECSJ
0-50mV	0-800	549-80AA-ECSN
0-50mV	0-1000	549-80AA-ECSS
0-50mV	0-1200	549-80AA-ECSU
0-50mV	0-1500	549-80AA-ECTC
0-50mV	0-2000	549-80AA-ECTM

### Product Codes – Direct Connected

Input	Scaling	Catalogue No.
0-100µA	TO SUIT	549-80AA-DR**
0-1mA	TO SUIT	549-80AA-FA**
0-20mA	TO SUIT	549-80AA-HF**
4-20mA	TO SUIT	549-80AA-HG*

## D.C. Voltmeter

### Product Code

Input	Scaling	Catalogue No.
0-50mV to 0-150V	TO SUIT	549-80VA-****

\*\* Specify scale required

\*\*\*\* Specify input and scale required

100mV shunt rated D.C. ammeters are available, replace the code EC with the code GB