

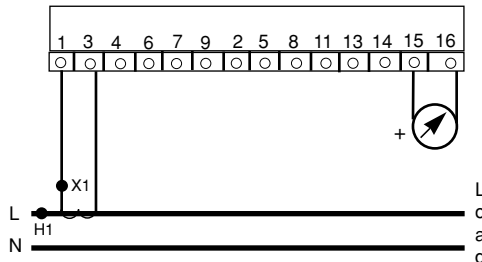
# 0.5 Transducers Paladin 250 Series

## A.C. Current Transducer Average Sensing Self Powered

### Features / Benefits

- ✓ Average sensing and calibrated to indicate the RMS value of a sine wave with less than 1% distortion.
- ✓ Internal power is derived from the input signal.
- ✓ Input and output are isolated.
- ✓ Current measuring applications to 0.5% accuracy.
- ✓ Measurements down to 20% of full input.

### 253-TAAU Single Phase



### Specification

**Inputs:** 1, 5 or 10A a.c.  
50 or 60 HZ  
Refer to factory for other inputs

**Auxiliary Power:** Self Powered

**Output:** 0/1, 0/5, 0/10 and 0/20mA

Single Phase. Current Transducer. Self Powered. 1 D.C. output.			
INPUT A.C.	AUX POWER	O/P D.C.	CATALOG N°
5A 60rk	Self	0/1mA	253-TAAU-LSFA-C6

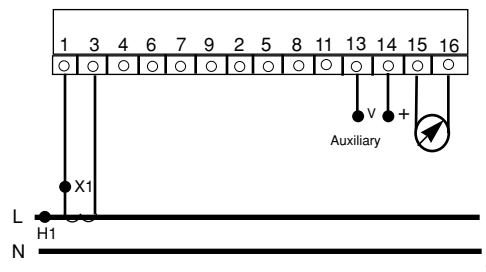
Single Phase. Current Transducer. Auxiliary Powered. 1 D.C. output.			
INPUT A.C.	A.C. AUX POWER	O/P D.C.	CATALOG N°
5A 60HZ	120V	4/20mA	253-TALU-LSHG-C6-DG
3 Phase. Current Transducers. Auxiliary Powered. 3 D.C. outputs			
INPUT A.C.	A.C. AUX POWER	O/P D.C.	CATALOG N°
5A 60 HZ 5A 60 HZ	120V 120V	0/1mA 4/20mA	256-TASU-LSFA-C6-DG 256-TASU-LSHG-C6-DG

## A.C. Current Transducer Average Sensing, Auxiliary Powered

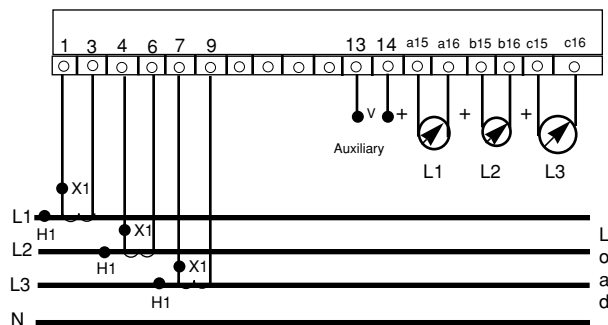
### Features / Benefits

- ✓ Average sensing and calibrated to indicate the RMS value of a sinewave with up to 1% distortion.
- ✓ Model TAL provides a current output with a live zero (4-20mA).
- ✓ Measurement of input currents down to zero.
- ✓ Isolation is provided between input, output and auxiliary.

### 253-TALU Single Phase



### 256-TALU & 256-TASU Three Phase



### Specification

**Inputs:** 1, 5 or 10A a.c.  
50 or 60 HZ  
Refer to factory for other inputs

**Auxiliary Power:**

**A.C.** 63.5, 100, 110, 120, 220, 240, 250, 380, 400, 415, 440 and 480V a.c.

**D.C.** 12, 24, 48, 110, 120 or 135V d.c. nominal

For output and full specification see page G3  
3 in 1 models contain three totally isolated transducers  
for the 256 Connection Diagrams see page G29  
Diagram 2.